



Association for  
the Study of  
**Literature &  
Environment**



# ASLE News

Winter 2014

A Quarterly Publication of the Association for the Study of Literature and Environment

## In This Issue

ASLE Bookshelf  
Contributing Members  
President's Column  
New ASLE Officers  
International Grant Recipients  
New Book Subvention Grants  
New Translation Grants  
ASLE Community Grants  
ASLE at PAMLA  
ASLE at SAMLA  
ASLE at WLA  
Member News  
ASLE News Notes

## Quick Links

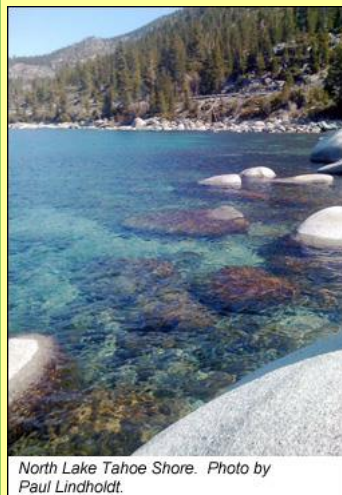
[Calls for Papers](#)  
[Calls for Manuscripts](#)  
[About ASLE](#)  
[ISLE Journal](#)  
[Discussion Lists](#)  
[Diversity Blog](#)  
[Graduate Student Blog](#)  
[Affiliated Organizations](#)



## President's Update

By Mark C. Long, Keene State College

While most of ASLE was making its way to the biennial gathering in Kansas, a few members were making plans beyond the conference that had yet to begin. Guided by the 2009 ASLE Strategic Plan, and drawing on the resources from our 2008-09 development campaign, we charged committees led by Heather Sullivan ([Translation Grant Project](#)), Anthony Lioi ([Subvention Grant Project](#)), and Byron Caminero-Santangelo ([Community Grant Project](#)) to develop the grant applications included in this issue of *ASLE News*. As many of you know, our first local project grant was awarded this past summer to the Wetlands Preservations Organization (WPO) and Ecojustice Coalition of Lawrence, KS, to support efforts to preserve and protect the sacred Wakarusa Wetlands. In addition to our support of local groups such as the WPO, the new [ASLE International Membership Grants Program](#) began widening access to educational and scholarly opportunities in our field, as explained below by our International Liaison, George Handley.



North Lake Tahoe Shore. Photo by Paul Lindholdt.

At our April Executive Council planning retreat we will take up where we left off in Lawrence. Among the most pressing issues is the organizational structure of ASLE. How do we address the opportunities and challenges that come with a growing membership? More specifically, how do we ameliorate the difficulties of staging a large conference every two years? Might there be viable alternative conference venues for our growing organization? We are also considering new ways to honor the diversity of our community. How do we continue to cultivate demographic, geographical and generational diversity? One proposal is to establish an organizational framework to support ASLE interest groups. Too, we are thinking together about our digital presence and strategy. Does our web site meet the needs of our members? How might we

more effectively make use of digital tools to fulfill our mission and goals? In addition, at our April meeting, the planning for ASLE 2015 will begin in earnest. As we look ahead to Idaho, I hope that you will as well. Help us think about our conference, in terms of programming, activities, and process, as well as our partnerships, as we seek to improve public discourse about the environment, and promote the study of literature and environment in our institutions and communities.

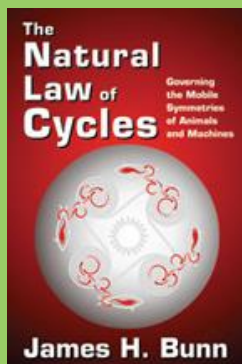
## ASLE Bookshelf

The following works were recently published by ASLE members. If we've missed your publication, please send bibliographic information to editor [Catherine Meeks](#).

Barilla, James. [\*My Backyard Jungle: The Adventures of an Urban Wildlife Lover Who Turned His Yard into Habitat and Learned to Live with It\*](#). New Haven, CT: Yale UP, 2013.

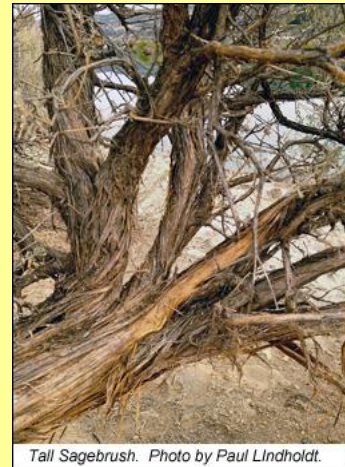


Bunn, James H. [\*The Natural Law of Cycles: Governing the Mobile Symmetries of Animals and Machines\*](#). Transaction Press, 2013.



Chaudhuri, Una, and Shonni Enelow. [\*Research Theatre, Climate Change, and the Ecocide Project\*](#). New York: Palgrave MacMillan, December 2013.

Let me close this winter update by encouraging you to contribute your talents and energies to ASLE. Consider joining us as we work to promote "the understanding of nature and culture for a sustainable world by fostering a community of scholars, teachers, and writers." Here are a few ways to contribute: envision your candidate statement for vice president or executive council; apply to be the new mentoring coordinator, awards coordinator, or graduate student liaison (call for GSL applications will appear in the spring 2014 *ASLE News*); add your name to the growing list of [sustaining, patron, and lifetime members](#); or contact the current leadership of ASLE to share your ideas about joining us in building your organization. Your time, financial support, and ideas will strengthen existing relationships, and help us build new ones.



Tall Sagebrush. Photo by Paul Lindholdt.

## ASLE Welcomes Newly Elected Officers

By Catherine Meeks, *ASLE News* Editor

Each year at this time, ASLE has the privilege of welcoming a new Vice President and two new Executive Council members to its leadership; every third year, we also welcome a new Diversity Officer. As you may have read in Immediate Past President Paul Outka's message to members in December, ASLE is thrilled to announce our newly elected officers, selected by the membership from among an incredibly strong slate of candidates. **Cate Sandilands** will serve as 2014 Vice President, 2015 President, and 2016 Immediate Past President;

**Janet Fiskio** and **Byron Caminero-Santangelo** will serve as 2014-2016 Executive Council members-at-large; and **Sarah Wald** will serve as 2014-2016 Diversity Officer.



Catriona Sandilands

Though newly elected, none of these individuals is new to ASLE. From 2010-2012, Cate Sandilands served on ASLE's Executive Council (while also serving, during part of that time, as president of the Association for Literature, Environment, and Culture in Canada (ALECC)), and served on the planning committee for the 2011 and 2013 ASLE conferences. Those members who attended the 2009 ASLE Conference in Victoria, B.C., will remember Sandilands' lively plenary session which addressed critical challenges for the future of ecocriticism, a field that she has contributed to immensely in the years since. A longtime member of the faculty of Environmental Studies at York

University, where she serves as Canada Research Chair of Sustainability and Culture, Sandilands is committed during her tenure at ASLE's helm to "develop[ing] stronger cooperative ties with our sister organizations internationally" and sees ASLE as being "uniquely positioned to tie together our longstanding scholarly, environmental and political commitments...with newer works concerned with globalization, petrocultures, digitalization, agential plurality, and resiliences/resistences in the Anthropocene." Author of *Queer Ecologies: Sex, Nature, Politics, Desire; The Good-Natured Feminist: Ecofeminism and the Quest for Democracy*; as well as numerous publications on queer, feminist, anti-racist,

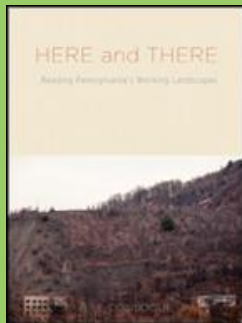




**Cokinos, Christopher.**  
[Bodies, of the Holocene.](#)  
 Kirksville, MO: Truman State  
 UP, 2013.



**Conlogue, Bill.** [Here and There: Reading Pennsylvania's Working Landscapes.](#) University Park, PA: Penn State UP, 2013.



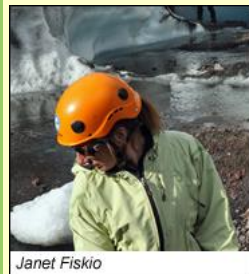
**Dreese, Donelle.**  
[Dragonflies in the Cowburbs.](#)

and multispecies justice, Sandilands says she has "developed a deep commitment to the importance of combining theoretical intelligence with political/ecological attentiveness and relevance." She brings this commitment, along with many exciting ideas for the shaping of the 2015 ASLE Conference, with her as she continues her service to ASLE in this new role.

Both the newly elected Executive Council members and Diversity Officer have likewise served ASLE in many capacities in the past. Most recently, **Byron Caminero-Santangelo** served as site host for the 2013 ASLE Conference in Lawrence, where he is Associate Professor and governance faculty member of Environmental Studies at the University of Kansas. He brings a "passion for building bridges across disciplines and between academics and community-based organizations" to his role on the EC. This passion is evident in his books *Environment at the Margins: Literary and Environmental Studies in Africa* and *Different Shades of Green: African Literature, Environmental Justice, and Political Ecology*, as well as with grassroots efforts to oppose road construction on a sacred wetland adjoining Haskell Indian Nations University (a project that received ASLE's inaugural Community Grant in 2013).



Byron Caminero-Santangelo



Janet Fiskio

**Janet Fiskio**, Assistant Professor of Environmental Studies and Comparative American Studies at Oberlin College, first joined the ASLE community while a doctoral student at the University of Oregon, where she helped host the 2005 ASLE Conference in Eugene. At the 2013 Conference, Fiskio facilitated (with Michael Ziser) a pre-conference seminar on Climate Change, and also currently serves as ASLE's liaison to the Association for Environmental Philosophy. Fiskio's current book project, *Counter Friction: Poetics and Politics in Climate Justice*, "examines the contributions of literature, art, performance, and protest to constructing spaces for participatory democracy to emerge."

**Sarah Wald**, newly elected Diversity Officer, also joined ASLE at the 2005 Conference in Eugene, while a graduate student, and has been an active member of the Diversity Caucus ever since. She sees ASLE's Diversity Caucus members as "uniquely situated not only to identify barriers to equity and inclusion, but also to envision new opportunities to support justice-oriented research, pedagogy, and community engagement." As both an academic and an activist, Wald has a deep commitment to "issues of inclusion and equity," and will strive as Diversity Officer to "promote an inclusive and accessible ASLE." Wald is currently Assistant Professor in the English Department at the University of Louisville.



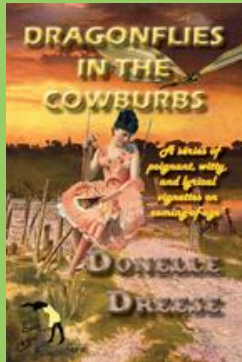
Sarah Wald



Clare Echterling

In addition to these elected posts, ASLE also welcomes newly appointed Graduate Student Liaison **Clare Echterling**. A doctoral candidate at the University of Kansas, Echterling was instrumental in preparing for and pulling off the successful 2013 ASLE Conference in Lawrence, assisting then-President Paul Outka and site host Byron Caminero-Santangelo.

Tuscon, AZ: Anaphora Literary Press, 2013.



Fisher-Wirth, Ann and Laura-Gray Street (eds). [\*The Eco-poetry Anthology\*](#). San Antonio: Trinity UP, 2013.



Gifford, Terry and Teresa Gómez Reus (eds). [\*Women in Transit Through Literary Liminal Spaces\*](#). Houndmills, UK: Palgrave Macmillan, 2013.



Several other former members of ASLE's elected leadership likewise deserve our thanks and gratitude as their terms come to a close. Outgoing Diversity Officer **Salma Monani** and outgoing Executive Council Members **Anthony Lioi** and **Kimberly Ruffin** have contributed greatly to ASLE during their three-year terms. Lastly, Immediate Past President **Joni Adamson** (2012 President, 2011 Vice President) leaves large shoes to fill. As Paul Outka expressed in his announcement to members in December, "from her initiation of ASLE's new grant programs, to the development of our new logo, to her tireless and always astute engagement with a myriad of individual issues, Joni's leadership has made ASLE a more generous, better organized, and more inclusive organization." ASLE is, in short, a better organization, thanks to all of your hard work!

## New International Membership Grant Program Completes first Successful Year

By George Handley, Brigham Young University, ASLE International Liaison

Beginning in 2013, ASLE initiated a program that provides International Membership Grants for up to 50 ASLE-US memberships for literature and environment scholars outside the US and Canada. International Membership Grants provide assistance to scholars who, through higher education, are seeking to advance their knowledge of the field of literature and environment. Interested individuals can read more about the grants and find instructions for applying at <http://www.asle.org/site/resources/international-scholarship/memberships>.

We are pleased to see such a geographical range of recipients of our International Membership Grants thus far. We have recipients from Africa, Europe, the Middle East, and Asia. We hope to encourage more individuals to consider applying for the grant. As a reminder, applicants are considered on a rolling basis; it is never too late to apply! Below, we highlight two recent recipients.



Takele Enkossa Gurmessa

Ethiopian **Takele Enkossa Gurmessa** describes reading both the poetry of Wordsworth and Keats as well as the poetry in his mother tongue, Oromo, as influential in helping him to think critically and meaningfully about his early memories of the flora and fauna in the forested highland of western Ethiopia. Takele holds an MA in English literature from Addis Adaba University and he has recently written some ecocritical pieces for Ambo

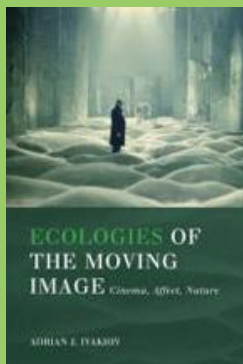
University's newsletter where he teaches and enjoys planning outings with students to the forests and mountains outside of Ambo. He looks forward to learning more from ASLE about how to cultivate an ecocritical tradition within Ethiopia. Welcome, Takele!

**Adele Tiengo** is a PhD student at the University of Milan who recently completed an MA thesis on animal studies and ethics. Having lived and studied for a time in Spain, she was able to establish alliances there with scholars associated with EASLCE. Eager to build relations with ecocriticism in North America because of her

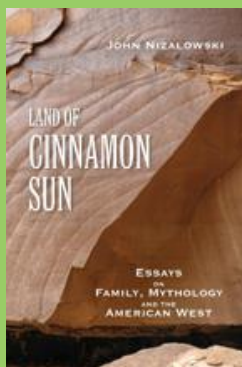
Hanson, Chad. [\*Trout Streams of the Heart\*](#).  
Kirksville, MO: Truman State  
UP, 2013.



Ivakhiv, Adrian J. [\*Ecologies of the Moving Image: Cinema, Affect, Nature\*](#).  
Waterloo, ON (Canada):  
Wilfrid Laurier Press, 2013.



Nizalowski, John. [\*Land of Cinnamon Sun: Essays on Family, Mythology, and the American West\*](#). Bokeelia,  
FL: Irie Books, 2013.



interest in North American literatures of the environment, she is pleased to be a membership grant recipient and to have been able to attend the recent ASLE conference in Kansas. She describes her current research as pertaining to "representations of apocalyptic and catastrophic scenarios as daily disasters in which human beings actively share responsibilities for their destructive potential." Welcome, Adele!

And welcome to all of our other recipients, listed below. We encourage interested applicants to visit our [website](#) or to contact our International Liaison, George Handley at [George.Handley@byu.edu](mailto:George.Handley@byu.edu).



Adele Tiengo

### 2013 Recipients of International Membership Grants

Laurin Eckermann, Germany  
Takele Enkossa Gurmessa, Ethiopia  
Elizabeth Harris, England  
Idom Inyabri, Nigeria  
Daniela Kato, China  
Riona Kelly, Northern Ireland  
Dina Mahmoud, Egypt  
Mohammad Nasser Modoodi, Iran  
Michael Paye, Ireland  
Amulya Kishore Purohit, India  
Animesh Roy, India  
Simone Schroder, Germany  
Adele Tiengo, Italy  
James Maina Wachira, Kenya

---

### New ASLE Book, Article, and Media Projects Subvention Grants

The ASLE Subvention Committee is soliciting proposals for innovative projects in ecocriticism and the environmental humanities. We are especially interested in projects of a scholarly and/or creative nature that engage with new media, aim at fostering intercultural or interdisciplinary exchange, or seek to bring insights from the environmental humanities to a non-academic public. Subventions may be used to cover the costs of publication and dissemination, including such items as costs for color reproductions, translation, or server space.

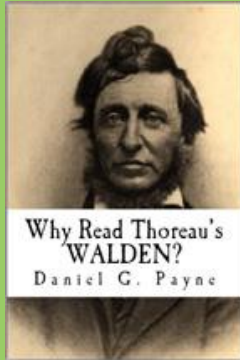
Accepted proposals will be funded up to a maximum of \$2,000 each.

Materials (and any questions) should be submitted electronically to Amy McIntyre by June 15, 2014: [info@asle.org](mailto:info@asle.org). Criteria for submission and required information include:

1. Membership in ASLE or any international sister organization (ASLE-Japan, ASLE-UKI, etc.).
2. Author name and university association, if affiliated with an institution; include full contact information (email, mailing address, and phone numbers) and a curriculum vitae.



Payne, Daniel G. [\*Why Read Thoreau's Walden?\*](#) Wickford, RI: New Street Communications, September 2013.



### **Sustaining, Patron, Lifetime & Honorary Members**

The members listed below have contributed to ASLE at the following membership levels. We thank them for their dedication and generosity. Honorary memberships are bestowed by the organization to recognize outstanding contributions in the field of literature and environment.

#### **Lifetime (\$1500 level):**

Elizabeth Ammons  
Mark C. Long  
Ursula Heise  
Kristin Jacobson  
Paul Rich  
Ravichandran  
Thangamani

#### **Patron (\$150+):**

Stacy Alaimo  
Kate Chandler  
Jeffrey J Cohen  
Annie Ingram  
Rochelle Johnson  
Jeri Pollock  
Catriona Sandilands

3. A summary in English of the project. The total summary should not exceed 3 single-spaced pages.
4. An explanation of the benefits of this work, if it were funded, including comments on possible audience(s) and relationship to other work in the field. The explanation should also not exceed 3 pages.
5. An itemized budget.
6. A schedule for the proposed project that includes a likely date of completion or a specific time frame for the process.

On completion of the project, a project report will be electronically submitted to the Managing Director of ASLE, Amy McIntyre, at [info@asle.org](mailto:info@asle.org).

Committee members: Hannes Bergthaller, National Chung Hsing University; Chia-ju Chang, Brooklyn College; Carmen Flys Junquera, University of Alcalá; Anthony Lioi (chair), The Juilliard School; Nicole Merola, The Rhode Island School of Design; Stephanie Posthumus, McGill University. ASLE representatives: Paul Outka, Immediate Past President; Amy McIntyre, Managing Director; and Mark Long, President.

## **New ASLE Grants to Translate Ecocritical Books into English**

In order to support work in ecocriticism from international scholars and to expand exchanges across cultures and continents, the ASLE Committee for Translations seeks proposals for books to be translated into English. Proposed books should be ecocriticism or fiction/non-fiction with a clear relationship to environmental issues, and must already have been published in a language other than English. For accepted projects, we provide funding to support the translation of these books. We also encourage authors to seek English-language publishers, particularly in the U.S., Canada, or Great Britain.

Funding for accepted books to be translated will be up to a possible maximum of \$1,000 each. We will award up to three translation grants each year.

Materials (and any questions) should be submitted electronically to Heather Sullivan, by June 15, 2014: [heather.sullivan@trinity.edu](mailto:heather.sullivan@trinity.edu). Criteria for submission and required information include:

1. Membership in ASLE or any international sister organization (ASLE-Japan, ASLE-UKI, etc.).
2. Author name and university association, if affiliated with an institution; include full contact information (email, mailing address, and phone numbers) and a curriculum vitae. In the case of a translator applying to translate the scholarly work of someone else, provide full information, if possible, for both author and translator(s).
3. Information on original place and year of publication and note any relevant copyright issues related to the original press.
4. A summary in English of the project. This should include a brief overview of the book itself and a short summary of each chapter. The total summary should not exceed 3 single-spaced pages.
5. A rationale for why it would be beneficial if this work were translated into English, including comments on possible audience(s) and relationship to other works in the field. The rationale should also not exceed 3 pages.

Jim & Julianne Warren

**Sustaining (\$100-149):**

Joni Adamson  
Bruce Allen  
Thomas Becknell  
Neil Browne  
Laird Christensen  
J. Gerard Dollar  
Ann Fisher-Wirth  
Susan & Larry Hanson  
Marc & Helen Hudson  
Richard Hunt  
McKay Jenkins  
Jenny Kerber  
Tom Lynch  
Barbara Mossberg  
Ashton Nichols  
Christopher Origer  
Paul Outka  
Catherine Puckett  
Anne Raine  
Kate Rigby  
Kent Ryden  
John Saad  
Lisa & Elizabeth Slappey  
William Stroup  
Alison Swan  
Mary Tischler  
H. Lewis Ulman  
Rick Van Noy  
Laura Dassow Walls &  
Robert Walls  
Monica Weis SSJ  
Priscilla Ybarra &  
J. Baird Callicott

**Honorary**

Homero & Betty Aridjis  
Wendell Berry  
Lawrence Buell  
John Elder  
Cheryl Glotfelty  
Linda Hogan  
William Howarth  
Shoko Itoh  
Annette Kolodny  
Glen A. Love  
Leo Marx  
Joseph Meeker  
Mary Oliver  
Simon Ortiz  
Ruth Ozeki  
Laurie Ricou  
Scott Russell Sanders  
Scott Slovic  
Gary Snyder  
David Suzuki  
John Tallmadge  
Louise Westling

6. A schedule for proposed translation work that includes a likely date of completion or a specific time frame for the process.
7. List of possible publishers or presses that might be interested in the translation. Applicant should briefly address feasibility of finding an English-language press.

Once the translation is complete, a copy should be sent to the Managing Director of ASLE, Amy McIntyre, at [info@asle.org](mailto:info@asle.org), with information on the press(es) to which it has been submitted.

Committee members: Chia-ju Chang, Brooklyn College; Serenella Iovino, University of Torino, Italy; Serpil Oppermann, Hacettepe University, Turkey; Stephanie Posthumus, McGill University, Canada; Modhumita Roy, Tufts University; Heather Sullivan (chair), Trinity University; ASLE representatives: Mark Long, President; Amy McIntyre, Managing Director; and Paul Outka, Immediate Past President

---

## Seeking Proposals for ASLE Community Grant

The ASLE Outreach Committee is soliciting proposals for projects that will help build connections between the environmental humanities and place-based environmental organizations working outside the academy. Projects will foreground the intersection between local efforts to address issues of environmental degradation and injustice and the role of representation and rhetoric. We are especially interested in projects enabling ASLE to connect with the environmental struggles of biennial conference localities. Funds may be used to cover the costs of public presentations or exhibitions (permanent or temporary), informational materials, literary and artistic productions, or interactive digital projects.

Accepted proposals will be funded up to a maximum of \$5,000 each.

Materials (and any questions) should be submitted electronically to Amy McIntyre by June 15 2014 at [info@asle.org](mailto:info@asle.org). Criteria for submission and required information include:

1. Membership in ASLE or any international sister organization (ASLE-Japan, ASLE-UKI, etc.) for at least one person involved in the project.
2. Names and descriptions of the organizations involved. Full contact information (email, mailing address, and phone numbers) for organizations and for at least one ASLE member.
3. Description of the project and the issue it seeks to address. This description should include a history of the issue, the goals of the project, and an explanation of how the project meets those goals. It should not exceed 2 single-spaced pages.
4. An explanation of how the project connects the environmental humanities with local environmental activism. The explanation should be no longer than a single-spaced page.
5. An itemized budget.
6. A schedule for the proposed project that includes a likely date of completion or a specific time frame for the process.

On completion of the project, a project report will be electronically submitted to the Managing Director of ASLE, Amy McIntyre, at [info@asle.org](mailto:info@asle.org).

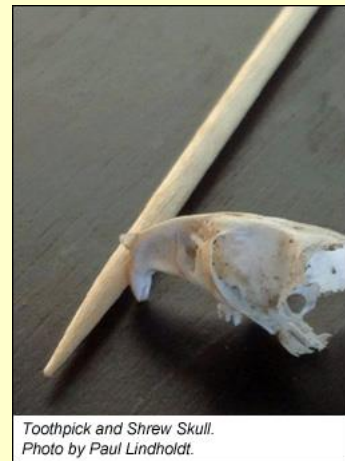
Committee members: Byron Caminero-Santangelo, Executive Council Member; Mark Long, President; Paul Outka, Immediate Past President, Amy McIntyre, Managing Director.

## Ecocriticism Panels at PAMLA 2013

By Kevin Hutchings, University of Northern British Columbia

The Pacific Ancient and Modern Language Association (PAMLA) held its 111th annual conference at the Bahia Resort Hotel in San Diego, California, in early November, 2013. In my role as ASLE's liaison to PAMLA, I had the pleasure of organizing two ASLE-sponsored Ecocriticism panels. This was the third year in a row that ASLE was represented at PAMLA's annual conference, and both panels were well attended. As usual, I introduced each session by plugging the benefits of ASLE membership, discussing our biennial conferences and symposia, and encouraging folks to consider submitting their work to *ISLE*.

Our first Ecocriticism panel highlighted the speakers' shared interest in the representation of animals and human-animal relationships. Starting things off, Holly Henry (California State, San Bernardino) considered the status of non-human primates in evolutionary theory. Drawing on sources ranging from Sophocles to Frans de Waal, she showed how, for primates and humans, the moral virtues of cooperation, empathy, and fairness are rooted in shared evolutionary processes. Kurt Fosso (Lewis and Clark College) followed with a presentation of Wordsworth's little-known poem "Peter Bell," exploring its discourse on our moral obligations to animals, and unpacking Wordsworth's deconstructive notion of "the animal within" the human. Next, Scott Riley (St. Mary's College of California) considered John Haines's response to Robinson Jeffers' concept of "inhumanism," which challenges notions of human separation from, and mastery over, animals. Finally, Dee Horne (Northern British Columbia) examined Mary Oliver's depictions of birds, showing how Oliver's poetics "ornithologize humans" in a manner highlighting the "interpenetration of the natural and the human."



Toothpick and Shrew Skull.  
Photo by Paul Lindholdt.

While the second Ecocriticism panel covered a diverse international array of literary and cultural texts, each speaker examined issues surrounding the representation and use of water. Cecilia Cavanaugh (Chestnut Hill College) began with an ecofeminist investigation of water imagery in Spanish dramatist Federico García Lorca's *Yerma*, showing how the eponymous heroine's efforts to free herself from an oppressive marriage are allegorized according to differing attitudes toward nature and contrasting depictions of water. Next, Marguerite Nguyen (Wesleyan University) considered oceanic Vietnamese-American works in which water and water motifs figure prominently; in the process, she demonstrated how her texts' focus on the Pacific challenges common ideas of America as a terrestrial and Atlantic-world nation. In the following paper, Andrew Wallis (Whittier College) examined the seemingly contradictory role of French novelist Jean Giono, a self-professed anti-industrialist, in supporting the construction of a controversial French hydro-electric dam by promoting a state-financed propagandistic film entitled *Eau Vive*. In the panel's concluding presentation, Ilaria Tabusso Marcyan (California, San Diego) considered Delhi-based author Vandana Shiva's efforts to stop multi-



national agro-businesses from patenting seeds and privatizing water, concluding with a discussion of San Diego's New Roots Community Garden as a local experiment in food security, social justice, and urban reconnection to the land.

Because of the high quality of the papers and of the question period that followed each panel, PAMLA 2013's ASLE-sponsored Ecocriticism panels were a considerable success. PAMLA 2014, which will be held October 31-November 2, 2014, at the Riverside Convention Center in Riverside, California, will give us an opportunity to keep the momentum going. Towards that end, I invite all ASLE members to consider submitting a proposal for next year's ASLE-sponsored Ecocriticism panels. And please consider serving in the rewarding role of PAMLA liaison to ASLE, see the description below. The Call for Papers will be posted soon at [www.pamla.org](http://www.pamla.org).

### Seeking New PAMLA Coordinator

ASLE is seeking a member to serve as its liaison to the Pacific Ancient and Modern Language Association (PAMLA) convention held each fall. We thank Kevin Hutchings, the outgoing PAMLA liaison, for his service to ASLE in this key position for the past several years!

This is an ongoing position beginning immediately upon appointment, with no defined term, though we do prefer a minimum three year commitment. A liaison between ASLE and another professional organization affiliated with us has the responsibility to maintain open lines of communication between the two organizations, and make sure that the guidelines for the affiliation are being met. These include the following:

- Keeping ASLE's Professional Liaison Coordinator (PLC) updated on all activities related to the affiliation and discussing new ideas for projects, programs or conferences with the PLC.
- Affiliates are guaranteed one panel on the program of the PAMLA conference. (Additional panels will be considered but are not guaranteed.) The liaison is responsible for choosing a relevant topic, preparing a CFP, collecting submissions, choosing the papers and submitting the panel proposal by the general deadline. At the conference itself, the liaison needs to ensure that the panel chair runs the panel in a professional manner.
- Providing summaries of their activities (such as the ASLE-sponsored conference panels) for *ASLE News*. The liaison should plan to write--or assign someone from the panel to write--a short summary after the conference has concluded and submit to the *ASLE News* Editor for the next edition.

If you would like to be considered for this position, send an email with a short statement of interest and relevant conference coordinating experiences, along with your CV, to ASLE President Mark Long, [mlong@keene.edu](mailto:mlong@keene.edu). Please submit your application by March 31, 2014 for full consideration.

---

### ASLE Panel at SAMLA Convention

By Bryan Giemza, Randolph-Macon College

The South Atlantic Modern Language Association (SAMLA) convened in Atlanta, Georgia from November 8-10, where the ASLE-sponsored session met to discuss "Southern Wilds and Unnatural Disasters." The ASLE panel convened to investigate how the literary representation of disaster exposes the eco-cultural history of environmental catastrophe. In keeping with the "networked worlds" theme of this

year's conference, as well as the regional and global focus of SAMLA, the papers gave consideration to bioregionalism, the US south and global south.

Bryan Giemza (Randolph-Macon College) chaired and presented on "Lost Worlds: Cormac McCarthy and the TVA," documenting through archival sources the important influence of the Tennessee Valley Authority's influence on McCarthy's family life and fiction. Rebecca Godwin (Barton College) gave a memorable paper titled, "'The hill looked bare as a half-plucked chicken': Appalachian Wastelands in Robert Morgan and Ron Rash," in which she demonstrated how the flood motif and economic exploitation are tied to environmental concerns in the work of two writers who hail from the southern Appalachians. Joye Palmer (University of North Carolina at Charlotte) presented on "Magical Realism: The Cohesive for Culture on the Periphery," and made a richly-illustrated case for considering the film *Beasts of the Southern Wild* through the lens of magical realism in order to fully appreciate its environmental dimensions. Taken together, the papers all spoke to the economic colonization of the region in one form or another, and a lively discussion followed a well-attended session.



Milkweed. Photo by Paul Lindholdt.

In addition to the ASLE panel, two sessions were devoted to "Violent Ecology: Representations of Violence and the Environment in 20th and 21st Century America." Writers under discussion included Eggers, Silko, Butler, and McCarthy.

Next year's SAMLA conference might be of special interest to ASLE members, as the focus of the conference will be "Sustainability and the Humanities." It's a spacious tent, and all are invited!

---

## ASLE at WLA

By Will Lombardi, University of Nevada-Reno

The Western Literature Association (WLA) hosted two well-attended and well-received ASLE-sponsored panels at their 48th annual conference in Berkeley, CA, in October. In keeping with the spirit of the conference theme, "Califia: The West Calling the World," each panel focused either on subjects related to California agriculture, agriculture and globalization, or both. The first panel was chaired by Kyle Bladow (University of Nevada, Reno), and featured papers by Bladow, Tom Lynch (University of Nebraska), and Mascha Gemein (University of Arizona). Bladow's paper, "Milking It: The Pastoral Imaginary of California's (Non)Dairy Farming," began with a rhetorical analysis of almond milk packaging and compared contested dietary and environmental values as well as the similar sentiments about land stewardship and family in the dairy and non-dairy industries. Lynch's paper, "Reconciliation with Place: Bioregional Narratives of Reinhabitation in the US West and Australian Outback," examined the contentious environmental implications of the pastoral tradition on both continents, and discussed the promise and limitations of bioregional narratives written about each space. Finally, Gemein discussed the food sovereignty movement as a bioregional and cultural response to globalization and food inequity in her presentation dealing with native foodways, "Tohono O'odham Agricultural Revitalization, Food Sovereignty, and Literary Outreach." In related WLA news, Gemein was elected to the Western Literature Association

Executive Board, and Tom Lynch was introduced as the new editor of *Western American Literature*. Congratulations to them both!



Spawned Kokanee, Lake Coeur d'Alene, Idaho. Photo by Paul Lindholdt.

The second ASLE-sponsored panel was chaired by Paul Formisano (University of South Dakota), and featured papers by Formisano and Mark R. Bousquet (University of Nevada, Reno). Formisano's paper, "Imperial Dreams: California Agriculture and *The Winning of Barbara Worth*," provided an ecocritical reading of the lesser known 1911 novel by Harold Bell Wright, which Formisano describes as one of the most ardent examples of the pro-reclamation sentiment that swept California at the turn of the century, a sentiment that still troubles food production and water shortage in the state today. Bousquet's paper, "Mark Twain's 'Lonely Tenant': Mono Lake, California Water Policy, and How the Rim Fire Can Save Hetch Hetchy," likewise focused on water

policy, particularly urban water use and the rhetoric of conservation near the turn of the last century.

ASLE members should take note: the call for papers for the 2014 Western Literature Association conference, "Border Songs," in Victoria, British Columbia was posted recently to the ASLE listserv and website by the conference organizers and is available on the [Western Literature Association website](#). If you are interested in participating on an ASLE-sponsored panel in Victoria, please contact Will Lombardi, the WLA-ASLE Affiliate Liaison. Get your passport ready!

---

## Member News

Member **Ufuk Özdağ** of Hacettepe University, Ankara, Turkey, recently published her Turkish translation of Aldo Leopold's *A Sand County Almanac* (Bir Kum Yöresi Almanağı). Ufuk writes the following about her translation: "*A Sand County Almanac* is a treasure for the entire earth's population. With this constantly in mind, my priority goal has been a very faithful translation, to reproduce the poetry and the precise fusion of disciplines of Leopold's original text. The book will be read extensively in Turkey, and will, hopefully, become a key book to be used in the translations of ASCA into many other Turkic languages spoken across Central Asia. This edition will teach us, Turks, to see our own lands!" Ufuk's translation includes Curt Meine's "Introduction to the Turkish Edition," as well as 210 endnotes for the Turkish reader. On the front page of the edition, Ufuk states:



Ufuk Ozdag, with the late Nina Leopold Bradley.

*The Turkish edition of Aldo Leopold's A Sand County Almanac is in print for the first time, sixty four years after its publication in the United States in 1949. In the course of time, Leopold's unmatched nature philosophy gained much more importance and the Almanac was translated into many world languages. Defined as*



*the foundational book of modern environmental movement, and meeting with millions of readers, A Sand County Almanac will perhaps be hailed in history as the most significant conservation and earth restoration book of the twenty-first century-the century that the delegates of Sixth World Wilderness Congress resolved that it be declared "the century of restoring the earth."*

To read Ufuk's "Foreword" to the Turkish edition see Aldo Leopold Foundation's [January e-Newsletter](#). Ufuk will also be a speaker at an "[Aldo Leopold Weekend](#)" event at the Turkish American Association, in Ankara, on March 1, 2014; she will give a talk entitled "Leopold's Legacy and the Turkish Edition of *A Sand County Almanac*."

---

## **ASLE News Notes**

### **Member News**

Whether you got a new job, won an award, or did something interesting, enlightening, or exciting, we want to know what you're up to! If you have some news to share with other ASLE members, and it doesn't "fit" into the Bookshelf, PhD, or Emeritus categories, please contact Catherine Meeks ([catherine.meeks@gmail.com](mailto:catherine.meeks@gmail.com)) with the Subject heading "Member News."

### **ASLE Emeritus**

*ASLE News* honors those ASLE members retired or retiring from teaching. If you would like to acknowledge someone in this new feature--or if you yourself will be retiring during the coming academic year--please contact Catherine Meeks ([catherine.meeks@gmail.com](mailto:catherine.meeks@gmail.com)). We will include a brief account of scholarly interests, the institutions of employment and years taught in the next newsletter.

### **ASLE PhDs**

Have you or one of your students recently defended a dissertation? If so, ASLE News wants to know. Each issue, we include announcements commemorating those members who have recently completed their doctoral work. If you would like to be included in this feature, please contact Catherine Meeks ([catherine.meeks@gmail.com](mailto:catherine.meeks@gmail.com)) with the dissertation title, degree-granting institution, and committee members.